

## Premium List

### AKC Licensed All Breed Agility Trials

(Held under American Kennel Club Rules and Regulations)

## Sno-King Agility Club



### November 12-14, 2021

Friday, Nov 12, 2021  
(event #2021529004)

Saturday, Nov 13, 2021  
(event #2021529005)

Sunday, Nov 14, 2021  
(event #2021529006)

### ARGUS RANCH

35612 212<sup>TH</sup> Way SE, Auburn, WA 98092

### Judges:

Lisa Potts – Springfield, IL

Danielle LaGrave – West Jordan, UT

**This Event is Accepting Entries for All American Dogs/Mixed Breed Listed in the AKC Canine Partners Program**

**NEW FIX & GO ON AND FEO RUNS WILL BE ALLOWED AT THIS TRIAL SEE DETAILS ON PAGE 3**



### Certification

Permission has been granted by the American Kennel Club for the holding of this event under rules and regulations –  
Gina M. DiNardo, Executive Secretary

**Opening Date Friday, September 17, 2021 8:00 am**

**Closing Date Friday, October 29, 2021 8:00 pm**

### Limited to 700 runs per day

Envelopes and/or transactions containing entries for more than (10) dogs (the maximum allowed) shall be treated as an invalid entry.

Express mail must be designated "no signature required"

No hand deliveries accepted in the first 24 hours

### Trial Hours

All Days: 7:00am – 7:00 pm

### OFFICERS OF THE SNO-KING AGILITY CLUB

President: Carole Pettenski, 4047 Glendale Rd., Clinton, WA 98236  
Vice President: Gary Webster, 13015 Ingraham Rd., Monroe, WA 98272  
Treasurer: Kathy Losacco 22215 84<sup>th</sup> Ave. West, Edmonds, WA 98026  
Secretary: Marsha Skewis 17215 NE 33<sup>rd</sup> St., Redmond, WA 98052

TRIAL CHAIRPERSON	EVENT SECRETARY
Margaret Hughes 22272 NE Woodinville-Duvall Rd. Woodinville, WA 98077 425-236-0104 <a href="mailto:magspaws@gmail.com">magspaws@gmail.com</a>	Lori Sage P.O. Box 3292 Oregon City, OR 97045 503-840-4303 (cell) <a href="mailto:k9sports22@gmail.com">k9sports22@gmail.com</a> Premiums and other trial information: <a href="http://www.k-9sports.com">www.k-9sports.com</a>

### EVENT COMMITTEE

Margaret Hughes, Carole Pettenski, Gary Webster, Al Hasegawa, Emma Hughes, All Board & Club Officers

### VETERINARIAN

Veterinarian (On Call): Summer Vet Hospital, 15215 Main St., Sumner, WA 98390 253-863-2258

(Exhibitors should follow their veterinarian's recommendations to assure their dogs are free of internal and external parasites, any communicable diseases, and have appropriate vaccinations.)

### JUDGES AND ASSIGNMENTS

<b>Lisa Potts</b> Springfield, IL	<b>Danielle LaGrave</b> West Jordan, UT
<b>Fri:</b> T2B, All STD, Premier STD <b>Sat:</b> All FAST, All JWW, Premier JWW <b>Sun:</b> T2B, All STD, Premier STD	<b>Fri:</b> All FAST, All JWW, Premier JWW <b>Sat:</b> T2B, All STD, Premier STD <b>Sun:</b> All FAST, All JWW, Premier JWW

### RING INFORMATION

Rings (2):STD Ring 100 wide x 100 deep, JWW Ring 90 wide x 100 deep indoors on dirt

### ENTRY INFORMATION

First run entry of each dog (includes a \$3.50 AKC fee)..... \$19.00  
2<sup>nd</sup> entry of each dog (includes a \$3.00 AKC fee) ..... \$19.00  
3<sup>rd</sup> and 4<sup>th</sup> additional entries of the same dog (includes \$3.00 AKC fee) ..... \$12.00  
5<sup>th</sup> and 6<sup>th</sup> additional entries of the same dog (includes \$3.00 AKC fee) ..... \$12.00  
One entry form per dog may be used for all days. **Jr Handler Discount – \$10 per run**

### MAKE CHECK PAYABLE (in US Funds) TO: Sno-King

**Closing Date:** Closes Friday, Oct 29, 2021 at 8:00 pm. Entry method is First Received.

### Online vs Paper Entry Primary Limits:

Sno-King is accepting online entries for this trial through the K-9 Sports Online Entry Form. Go to <https://k-9sports.com/agility-online-entry-form-2/> to complete the online entry form. A 7% fee will be charged for all online entries. During the first 48 hours after opening, the initial limit of entries designated as either online entries or paper entries will be as follows: Online Entries: 33% (240) Paper entries: 67% (460). If either form of entry has not filled at the end of the 48 hour time period, the club reserves the right to decrease or increase either the online or paper limits accordingly.

### Paper entries received within 24 hours of the opening date & time limit must:

- 1) Include postage or be metered. No hand deliveries in the first 24 hours.
  - 2) Be delivered by a multi-state or multi-national postage or carrier service, including but not limited to USPS, FedEx, UPS & DHL. If above conditions are not met, the entries are not valid and must be returned to the sender.
  - 3) Express mail must be designated "no signature required".
- A 100% refund of the entry fee will be given for any batch that comes into season with written notification from a veterinarian provided to the Trial Secretary.

### Walk-through & Warm-up

Handlers in all classes will be permitted to walk the course without a dog prior to the start of the class. At the discretion of the judge, if the size of the entry for any class might inhibit a safe and fair walk-through by handlers, height divisions may be used to divide the walk-through into groups, e.g. walk-through for the 8", 12" and 16" division handlers followed by runs for those height divisions; then walk-through and subsequent runs for the 20", 24" and 24C" divisions. A warm-up area, consisting of a regulation agility jump, will be provided. Umbrellas are not allowed on the course during the walk through.

### CLASSES OFFERED & JUDGING TIMES

#### Classes Offered

All levels of Standard STD, JWW, FAST and T2B, including the preferred classes, will be offered according to the entry form. (International Sweepstakes Classes will be offered when indicated in the premium and on the entry form). A complete set of rules for all classes is available from the American Kennel Club, 8051 Arco Corporate Drive, Suite 100, Raleigh, NC 27617-3390, or from the AKC web site. **It is the exhibitor's responsibility to enter their dog in the correct class.** The Trial Secretary cannot make any changes (except for move-ups as noted) after the closing date of the trial. Be sure to check your entry form carefully and make certain you have entered the correct class(es).

**Move-ups, Errors, Confirmation Protocols.** Move-ups after entries close must be submitted to the trial secretary in writing (mail or email) by **6 pm, Pacific time, Monday, Nov 8, 2021**. Requests for move-ups over the phone **will not be accepted.** Day-to-day move-ups will be accepted at the trial. Move-ups must be submitted on the move-up form provided, to the trial secretary no later than 30 minutes after completion of the last class of the day.

### TENTATIVE RUNNING ORDER

Judging will not start before 8:00 AM each day.  
Depending on the entry numbers, we may start later.

FRIDAY (Small to Tall)		SATURDAY (Tall to Small)		SUNDAY (Small to Tall)	
Ring 1	Ring 2	Ring 1	Ring 2	Ring 1	Ring 2
T2B	All FAST	T2B	All FAST	T2B	All FAST
Prem STD	Nov JWW	Prem STD	Nov JWW	Prem STD	Nov JWW
Mas STD	Open JWW	Mas STD	Open JWW	Mas STD	Open JWW
Open STD	Mas JWW	Open STD	Mas JWW	Open STD	Mas JWW
Nov STD	Prem JWW	Nov STD	Prem JWW	Nov STD	Prem JWW

### OBSTACLES AND EQUIPMENT

Obstacles shall meet the specifications for obstacles in the current edition of AKC Regulations for Agility Trials. There will be no equipment familiarization at this trial. As of 9/1/06 AKC does not allow it.

#### Equipment

The equipment for this event is provided by Argus Ranch.

### AWARDS, RIBBONS AND PRIZE INFORMATION

#### Awards

Awards for qualifying scores only. All awards must be claimed at the show. Ribbons will be awarded to first through fourth place in each height division in each class.

First Place: Blue Ribbon ~ Second Place: Red Ribbon ~ Third Place: Yellow Ribbon

Fourth Place: White Ribbon ~ Qualifying Score: Dark Green Rosette

MACH & PACH ribbons and bars will be presented to dogs completing those titles if you & your dog are close to a MACH or PACH, please let a member of the trial committee know.

### ELIGIBILITY AND HEIGHT DIVISIONS

#### Dogs Eligible to Enter

This trial is open to all dogs 15 months of age or older that are registered with the American Kennel Club or are registerable breeds that have obtained PAL/ILP numbers from the American Kennel Club, except bitches in season, aggressive dogs, blind dogs, or dogs suffering from any deformity, injury or illness which may affect the dog's physical or mental performance. **Mixed breed dogs** listed in the AKC Canine Partners program are eligible to enter this all-breed AKC agility trial. Mixed breed dogs entered in these events must list the breed name as "Canine Partner" (mixed breed) and not as a breed hybrid and must include their AKC Canine Partners number on the entry form and check the AKC No. Box.

#### Height Divisions

REGULAR	PREFERRED	HEIGHT AT WITHERS
8"	HANDLERS MUST RUN THEIR DOG IN THEIR PROPER ELIGIBLE HEIGHT.	OWNERS ARE RESPONSIBLE FOR ENTERING THEIR DOG IN THE PROPER HEIGHT DIVISION.
12"	4"	FOR DOGS 11 INCHES AND UNDER AT THE WITHERS
16"	8"	FOR DOGS 14 INCHES AND UNDER AT THE WITHERS
20"	12"	FOR DOGS 18 INCHES AND UNDER AT THE WITHERS
24"	16"	FOR DOGS 22 INCHES AND UNDER AT THE WITHERS
24C"	20"	FOR DOGS OVER 22 INCHES AT THE WITHERS
	N/A	Dogs who measure into the 8" through 20" regular jump height divisions may opt to enter the 24-choice height division at their owner's discretion. Dogs who measure into the 24" regular jump height division may not enter 24-choice.

#### Jump Height Information

All dogs without height cards will have to be measured by the judge of record, except 24"/24C" dogs. If a VMO or an AKC Representative is available, all dogs without height cards, including 24"/24C" dogs, will need to be measured. When filling out the entry form, there is a new section at the top of the form for exhibitors to designate whether your dog has a valid jump height card or if your dog needs to be measured. Please check the appropriate box so that the Trial Secretary knows whether to include your dogs on the Dogs to Be Measured List. For complete details on the Jump Height Card Process go to [www.k-9sports.com](http://www.k-9sports.com) and click on the link on the Events page.

### **Entering for Exhibition Only (FEO)**

FEO allows exhibitors to work with their dogs in a trial environment. FEO is only offered in the Time 2 Beat and FAST classes. Participation in FEO is non-qualifying.

- FEO runs are treated as trial entries. The exhibitor must enter the class(es) (T2B and/or FAST) prior to the closing date, pay class entry fee(s) and the Trial Secretary must record the entry in the Trial Catalog as part of the results for that class. FEO does not need to be noted on the entry form; the handler will declare the day of the show.

- Dogs may be entered in any jump height for FEO runs. If entered in an ineligible jump height, the team is committed to FEO for that run and must declare FEO on the start line. Day of show jump height changes are not allowed.

- Dogs may be entered in any level of FAST (Novice, Open, Excellent, Master). If the dog is not eligible for the level entered, the team is committed to FEO for that run and must declare FEO on the start line. Day of show level changes are not allowed.

- The exhibitor must declare FEO in the ring prior to leading out. FEO may be declared earlier (ex. when checking in at the gate board).

- Toys are allowed in the ring. Toys must be non-audible and may not leave the handlers hand. Toys that roll freely may not be used.

- Food/treats are not allowed in the ring
- FEO should be utilized for the benefit of the dog and not as a punitive correction. Harsh verbal and /or physical corrections shall not be tolerated. Any determination of harshness by the judge shall be immediately whistled and the handler will be dismissed from the ring.

- A judge must monitor the entire run. Judges can stop a run at any time

(Reminder: This section only needs to be published in the Premium List if the Club is offering FEO.)

### **Fix and Go On**

FNG allows exhibitors to immediately reattempt an obstacle at any time while on course when the dog's performance of an obstacle is not to their expectation. This allows the dog to successfully complete the obstacle then finish the course or leave the ring on a positive note. Using FNG will result in a non-qualifying score. Fix and Go On is not pre-entered; rather, it occurs during the run

## VOLUNTEERS

### ~~ VOLUNTEERS NEEDED ~~

#### **Please sign up at the trial.**

**Volunteers** are the key to a successful trial and are greatly appreciated. We will ensure that your volunteer duties will not interfere with your runs. We will be using the white board system for volunteers. Please sign up to work when you can. We'll have a raffle just for the workers!!

**Important Information for Exhibitors**

- All owners and handlers are responsible for correctly entering and participating in this trial in accordance with AKC rules. Owners are responsible for errors in entry forms, regardless of who may make such errors.
- All dogs must be on leash at all times except when in the ring or when in the designated agility warm-up area. AKC does not permit pinch/prong collars, electrical or special training collars anywhere on the trial grounds.
- The safety of dogs is of primary concern. By entering the trial, exhibitors acknowledge that they are familiar with the rules and regulations of the AKC agility program, and that their dogs are familiar with and able to perform all obstacles safely.
- Confirmation of entry and a schedule of judging time will be sent to the address (email will be used when provided on the entry form) on the official AKC entry form after the closing date. If an exhibitor has not received a copy of the schedule at least seven days prior to the show, the trial secretary should be contacted. Returned checks do not constitute a valid entry. If a check is returned, the entry will be deemed invalid, and the issuer will be billed for all trial associated fees, including, but not limited to: AKC fees, judges fees and secretarial fees. **Envelopes/transactions containing entries for more than the ten (10) dog maximum shall be treated as an invalid entry.**
- Conditional, unsigned, incomplete, illegible, telephone or telegraph entries cannot be accepted. Entries not on official AKC forms or photocopies of AKC forms without the agreement form included are not acceptable.
- 100% of entry fees will be refunded if a **written request is received by the trial secretary on or before the trial closing date.** After closing, refunds will be given, if notification is received not less than 48 hours prior to the start of the trial, less all fees, for injured or ill handlers, injured or ill dogs. Bitches in season will receive 100% refund. No refunds will be given if request is received after the published commencement of the trial. Verification from a doctor or vet may be required at the club's discretion. No entry fee will be refunded if the trial cannot open or be completed by reason of riots, civil disturbances, fire, acts of God, public emergency, acts of public enemy, or any other cause beyond the control of the organizing committee.
- The Sno-King Agility Club, Argus Ranch and K-9 Sports LLC assume no responsibility for any loss, damage or injury sustained by exhibitors, handlers, or spectators, or to any of their dogs or property, and further assumes no responsibility for injury to any child not under the control of his or her parents or guardians.
- The Sno-King Agility Club may cancel this event in extreme weather conditions.
- It is expressly understood that exhibitors alone are responsible for the behavior of their dogs and/or children. Any exhibitor whose dogs and/or children create unnecessary disturbances or repeatedly engage in unsafe or disruptive behavior may, at the discretion of the trial committee, be asked to leave the trial site. In such case, no refund of any fees paid will be made. All dogs must be on leash at all times except when in the ring or when in the designated agility warm-up area.
- Please clean up after your dogs while on the show grounds and at the motel site. We want to retain these facilities for future events.
- Only dogs that are eligible to be shown under the AKC rules shall be allowed within the show precincts.

**Ring & Crating Information**

There will be NO indoor crating due to COVID-19 Restrictions. More information will be provided with your Final Confirmation.

All CDC, State and County guidelines related to Covid-19 will be closely followed. We are working hard to make sure all past practices are modified to adhere to those guidelines. Your health and safety is of utmost All CDC, State and County guidelines related to Covid-19 will be closely followed. We are working hard to make sure all past practices are modified to adhere to those guidelines. Your health and safety is of utmost importance. Guidelines will be included with the Final Confirmation letter which will be available five days before the event.

Checks for entry fees will be held until Oct 29, 2021. If the event cannot be held, checks will be shredded. Any vouchers/certificates included with entries will be returned.

If we cannot hold the event after entry fee checks have been deposited, then refunds will be sent once all funds have cleared the bank. AKC Online Entries will be refunded after the AKC OLE Check has been received, deposited and cleared the Club bank account. RV fees will also be refunded.

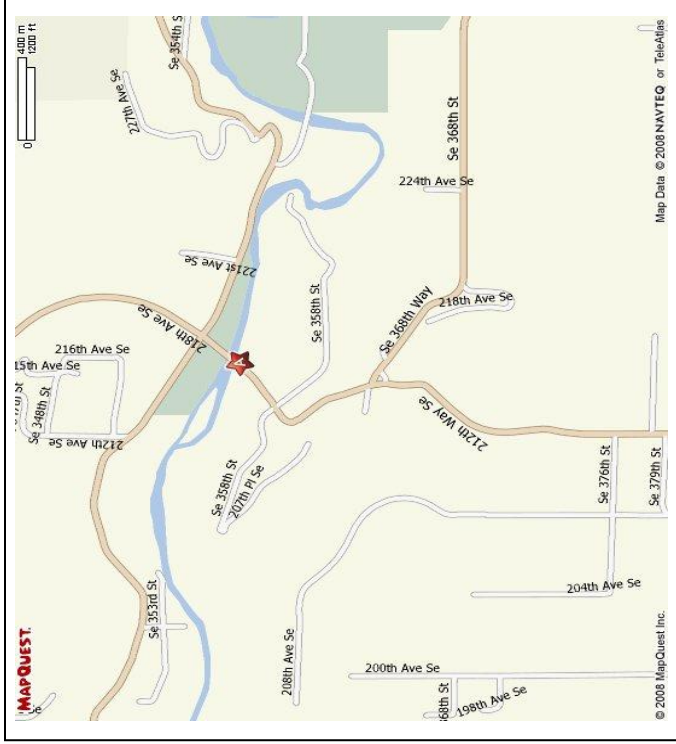
**WAIVER**

***By signing the entry form for this event exhibitor agrees to the following:***

***AGREEMENT Assumption of the Risk and Waiver of Liability Relating to Coronavirus/COVID-19.***

By signing this agreement, I also acknowledge the contagious nature of COVID-19 and voluntarily assume the risk that I may be exposed to or infected by COVID-19 by attending the Club event, and that such exposure or infection may result in personal injury, illness, permanent disability, and death. I understand that the risk of becoming exposed to or infected by COVID-19 at the Club event may result from the actions, omissions, or negligence of myself and others, including, but not limited to, Club Officers, committee, volunteers, landowners, and program participants and their families. I voluntarily agree to assume all of the foregoing risks and accept sole responsibility for any injury to myself (including, but not limited to, personal injury, disability, and death), illness, damage, loss, claim, liability, or expense, of any kind, that I may experience or incur in connection with my attendance at the Club event. On my behalf, I hereby release, covenant not to sue, discharge, and hold harmless the Club, its Officers, committee, grounds owners, agents, and representatives, of and from the Claims, including all liabilities, claims, actions, damages, costs or expenses of any kind arising out of or relating thereto. I understand and agree that this release includes any claims based on the actions, omissions, or negligence of the Club officers, committee, volunteers, landowners, agents, and representatives, whether a COVID-19 infection occurs before, during, or after participation in any Club Event.

**HOTEL/RV/DIRECTIONS**



**Hotel Information**

Rates and pet information are subject to change. Please confirm all details when making reservations.

- |                           |   |              |
|---------------------------|---|--------------|
| Argus Ranch Brutus Hall   | 35612 212 <sup>th</sup> Way SE., Auburn, WA 98092 | 253-333-2347 |
| Kings Motel               | 1334 Roosevelt Way E., Enumclaw, WA 98022         | 360-825-1626 |
| Best Western Park Central | 1000 Griffin St., Enumclaw, WA 98022              | 360-825-4490 |
| Best Western Park Plaza   | 620 S. Hill Dr., Puyallup, WA 98373               | 253-848-1500 |
| Sumner Motor Inn          | 15506 E Main, Sumner, WA 98390                    | 253-863-3250 |
| Bavarian Chalet Motel     | 15007 E. Main, Sumner, WA 98390                   | 253-893-2243 |

**Parking**

Day parking is on a first come, first served bases. Please park in designated parking spaces only. Do not block building entrances or fire lanes.

**Directions to Argus Ranch – 35612 212<sup>th</sup> Way SE, Auburn, WA 98028**

From the North/South I-5 or SR-167:

1. Exit **Hiway 18 East**
2. Exit **Auburn-Black Diamond Road East**, keep right
3. **Right** at **SE Green Valley Rd.** (just past Neely Mansion)
4. **Right** onto **212<sup>th</sup> Way SE**
5. First **Left** into Argus Ranch driveway. Follow signs for parking.

From SR-169 Southbound:

1. **Right** onto **Roberts Dr.** (in front of coal car).
2. Follow Roberts Dr. **Approximately 4 miles.**
3. **Left** at **218<sup>th</sup> St.**
4. Bottom of the hill is **Stop Sign**
5. **Straight across over cement bridge**
6. First **Left** into Argus Ranch driveway. Follow signs for parking.

From SR-169 Northbound:

1. **Left** at **SE Green Valley Rd.** (Boondocks Nursery)
2. Follow Green Valley Rd. **Approximately 4 miles.**
3. **Left** at **212<sup>th</sup> Way SE.**
4. First **LEFT** into Argus Ranch driveway. Follow signs for parking.

**Sno-King Agility Club  
Agility Trial Nov 12-14, 2021  
Argus Ranch**

**RV, Camping and Dorm Rooms Info ~ Dorm Rooms are Limited**

Overnight RV Parking is available at Argus Ranch. Contact Argus Ranch to find out the current camping rates.

**Reservations for this show should be reserved directly through Argus Ranch website. <https://www.argusranch.com/book-a-room>**



OFFICIAL AMERICAN KENNEL CLUB AGILITY ENTRY FORM

Sno-King Agility Club
November 12-14, 2021 ~ Argus Ranch, Auburn WA

Opens: Friday, Sept 17, 2021 8:00am PST • Closes: Friday, Oct 29, 2021 8:00pm PST

Table with 4 columns: Day, STD, JWW, FAST, T2B, Prem Std, Prem JWW. Rows for Day 1 (Fri - Nov 12), Day 2 (Sat - Nov 13), Day 3 (Sun - Nov 14), and Day 4.

Daily Entry Fee: 1st run \$19 each, 2nd run \$19 each, 3rd and 4th runs \$12; 5th and 6th runs \$12 each.

Junior Handler Discount \$10 per run

Make checks payable to: Sno-King Mail to: Lori Sage, PO Box 3292, Oregon City, OR 97045

IMPORTANT: Carefully read instructions before filling out!

ENTRY FEE ENCLOSED

Choose Either Regular OR Preferred Classes

Circle one jump height | Circle class selections | Only one selection per class (both Master & Premier allowed)

Table with 3 columns: REGULAR Classes (8", 12", 16", 20", 24"), PREFERRED Classes (4", 8", 12", 16", 20"), and corresponding skill levels (STD, JWW, FAST, T2B).

Non-Regular Classes International Sweepstakes - STD - JWW

Form fields for BREED, BREEDER, AKC\* NAME, SEX, VARIETY, CALL NAME, HEIGHT AT WITHERS.

Form fields for DATE OF BIRTH, PLACE OF BIRTH (LIST COUNTRY).

Form fields for AKC\* NO, ILP NO, PAL NO, FOREIGN REG. NO & COUNTRY, BREEDER, and Enter Complete Registration # below.

Form fields for SIRE, DAM, ACTUAL OWNERS.

Form fields for OWNERS ADDRESS, CITY, STATE, ZIP + 4, HANDLER.

Form fields for NEW ADDRESS, ENTER JR. HANDLER # if applicable.

Form fields for PHONE #, AEAAGL2 (10/17).

AKC Rules, Regulations, Policies and Guidelines are available on the American Kennel Club Web site, www.akc.org.

AGREEMENT

I certify that I am the actual owner of the dog, or that I am the duly authorized agent of the actual owner whose name I have entered. In consideration of the acceptance of this entry, I (we) agree to abide by the rules and regulations of The American Kennel Club in effect at the time of this event, and any additional rules and regulations appearing in the premium list of this event and entry form and any decision made in accord with them. I (we) agree that the club holding this event has the right to refuse this entry for cause which the club shall deem sufficient. I (we) certify and represent that the dog entered is not a hazard to persons or other dogs. In consideration of the acceptance of this entry and of the holding of this event and of the opportunity to have the dog judged and to win prizes, ribbons, or trophies, I (we) agree to hold the AKC, the event-giving club, their members, directors, governors, officers, agents, superintendents or event secretary and the owner and/or lessor of the premises and any provider of services that are necessary to hold this event and any employees or volunteers of the aforementioned parties, and any AKC approved judge, judging at this event, harmless from any claim for loss or injury which may be alleged to have been caused directly or indirectly to any person or thing by the act of this dog while in or about the event premises or grounds or near any entrance thereto, and I (we) personally assume all responsibility and liability for any such claim; and I (we) further agree to hold the aforementioned parties harmless from any claim for loss, injury or damage to this dog.

Additionally, I (we) hereby assume the sole responsibility for and agree to indemnify, defend and save the aforementioned parties harmless from any and all loss and expense (including legal fees) by reason of the liability imposed by law upon any of the aforementioned parties for damage because of bodily injuries, including death at any time resulting therefrom, sustained by any person or persons, including myself (ourselves), or on account of damage to property, arising out of or in consequence of my (our) participation in this event, however such, injuries, death or property damage may be caused, and whether or not the same may have been caused or may be alleged to have been caused by the negligence of the aforementioned parties or any of their employees, agents, or any other person. I (WE) AGREE THAT ANY CAUSE OF ACTION, CONTROVERSY OR CLAIM ARISING OUT OF OR RELATED TO THE ENTRY, EXHIBITION OR ATTENDANCE AT THE EVENT BETWEEN THE AKC AND THE EVENT-GIVING CLUB (UNLESS OTHERWISE STATED IN THIS PREMIUM LIST) AND MYSELF (OURSELVES) OR AS TO PURSUANT TO THE APPLICABLE RULES OF THE AMERICAN ARBITRATION ASSOCIATION. HOWEVER, PRIOR TO ARBITRATION ALL APPLICABLE AKC BYLAWS, RULES, REGULATIONS AND PROCEDURES MUST FIRST BE FOLLOWED AS SET FORTH IN THE AKC CHARTER AND BYLAWS, RULES, REGULATIONS, PUBLISHED POLICIES AND GUIDELINES.

INSTRUCTIONS

Handlers whose dogs measure into the 8" through 20" regular jump height divisions may opt to enter in a higher or 24-choice height division for all Regular titling classes, but not in a division lower than their proper height division. Dogs who measure into the 24" regular jump height division may not enter 24-choice. Dogs entered in the Preferred classes must compete at the required jump height and may not compete in a jump height division higher or lower than their proper height division.

All dogs that have not been officially measured for an Agility Jump Height Card may still compete; however, they must be measured by a Judge of record, an Agility Field Representative, or a Volunteer Measuring Official, prior to running. If measured by the Judge of record, that measurement will be valid for this trial or back-to-back trials only. If a measurement is necessary, it is the exhibitor's responsibility to have their dog(s) measured prior to running.

Dogs listed in the AKC Canine PartnersSM program may be eligible to enter all-breed AKC agility trials at the club's option. These dogs should be listed as All American Dog and must include their AKC number on the entry form and check the AKC No. box.

Junior Handlers should enter their Junior Handler number on the front of this form. Should you not have your Junior Handler number, it may be obtained from the American Kennel Club (919) 233-9767. If the Junior Handler is not the owner of the dog identified on the face of this form, what is the relationship of the Junior Handler to the Owner?

SIGNATURE of owner or his agent duly authorized to make this entry.

SIGN HERE X

Telephone Number: \_\_\_\_\_

Email Address: \_\_\_\_\_  New Email

In Case of Emergency - Name: \_\_\_\_\_ Phone#: \_\_\_\_\_

AEAAGL2 (10/17)

Exhibitor or owner MUST sign on the signature line beneath the instructions.